

DOORS
PLUS

NO FUSS

ISSUE | 2023

LIVING

Barn Door Charm

page 6 - 7

Alfresco Living

page 12 - 13

Working From Home In Style

page 18 - 19

French Door Flair

page 46 - 47

A Coastal Country Escape

***Eleanor Pendleton
Customer Profile***

page 2 - 5

Customer Profile

Eleanor Pendleton

When Eleanor and her husband got wind that the owners of a certain NSW Central Coast property were thinking of selling up, they didn't hesitate to pay a visit and check the house out for themselves.

Instantly, they fell in love with the place, but there was a lot of work to be done to make their country cottage dream a reality...

The Dream: A Coastal Country Escape

From their first visit, Eleanor could see that this property had the potential to become the coastal country escape they were longing for.

They loved the feel and character of the home, but they knew they were taking on a hefty renovation project.

All in all, with COVID-19 lockdowns to contend with along the way, it turned into a 5 month journey from vision to reality.

They dreamed of a more laid back, relaxed pace of life, with space to breathe, and this country cottage in a coastal spot seemed to completely embody that lifestyle.

"We really wanted to honour that country aspect," Eleanor says, but they also wanted to uplift the interior of the home to make it feel brighter, fresher and more airy.

They set about looking for furnishings, windows and doors that would complement the cottage style, while also finding ways to open up the space and let in plenty of light.

The Search: From Instagram to Showroom

During her research, Eleanor's eye was caught by a photo on Instagram of a set of beautiful French doors. She could see how this style would both suit the character of the property and create a fresh flow from inside to out.

After some digging, she was able to discover that the doors were originally from Doors Plus, so she lost no time in looking up her local showroom.

"When I went into the Doors Plus showroom I was really impressed by the customer service," Eleanor recalls.

"They were really accommodating and showed so many different options for what we were looking for – both in terms of French doors and also for a front door."

The Doors Plus specialist took some time to understand what they were after and then walked them through their options, demonstrating different styles, configurations and finishes.

Although she had a good idea of the doors she wanted, Eleanor couldn't help being drawn in by the sheer variety on offer: "I love that there was such an array of different samples. There was literally a style for everyone."

As Eleanor discovered, there really was no substitute for seeing and exploring these doors up close before making a final decision.

She says, “I loved seeing them in their raw form as well. I knew I wanted to paint them white but it was great to see them as they were, to see all of the different hardware options, and to see what could really be dreamed up.”

They identified the Claremont French doors as the ones that had grabbed Eleanor’s attention mid-scroll, and chose the 10 lite design with clear glass for the ideal combination of country cottage character and maximum light flow: “I knew it had to fit that cottage feel so I really wanted to find the perfect French door.”

They also chose a single Flinders door for their front entrance, to tie in the style throughout the home, and complemented their new entry door with side panels in InsulSafe decorative glass for the added touch of charm.

[continued on next page >](#)



“We really wanted to honour that country aspect”

Customer Profile

The Fit & Finish: Easy Does It

On the day of installation, they found the Doors Plus carpenter to be incredibly knowledgeable and helpful as he installed the frame and doors: “It gave me even more appreciation for the level of customer service.”

They had decided to paint the doors themselves, and found that the Doors Plus Paint ‘n’ Peel system made this easier than ever – especially as they had chosen a design with so many individual glass panes!

Eleanor says, “The French doors came with plastic on each of the window panes, so we didn’t have to mask and tape up every single pane within the French doors. It made the whole process so seamless.”

They painted their doors in a clean and elegant white, and then simply peeled off the film for a professional-looking finish.

Happily Ever After: Living the Country Life

For their first ever home renovation, Eleanor was pleasantly surprised by how smooth and easy it felt, from start to finish, and she couldn’t be happier with the transformation: “The end result has definitely exceeded my expectations.”

The front entrance looks elegant and charming, and the French doors make the living area feel bigger, lighter and brighter.

Moving through the home, they can now flow seamlessly from the cosy sitting room out onto a deck that overlooks the garden.

With the French doors open, they

can enjoy plenty of natural light and fresh, coastal air, and can watch their son playing in the garden or sneaking berries from the mulberry tree.

For the family, it’s not just been a house move or a home renovation, but a complete change in pace and lifestyle.

As she sits beside her stunning new French doors, looking out at her country cottage garden, Eleanor reflects, “The quality of the products that we have got from Doors Plus has been fantastic. We are so thrilled with the results and we think that they have just added so much character to our home.”





A large barn door with a black tracking system is shown in a room with dark grey walls. The door is partially open, revealing a glimpse of another room. The tracking system is mounted on the wall and ceiling.

Barn Door Charm

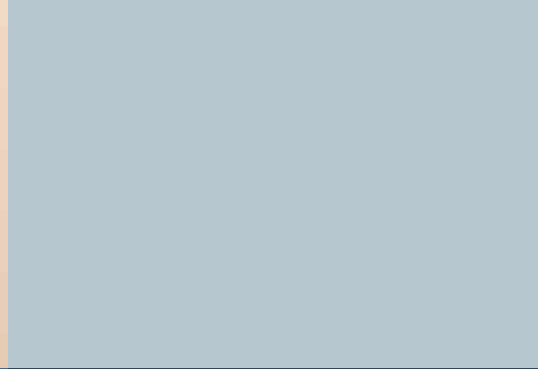
Barn doors are a great way to add style and character to any room. When installed with the Glengary tracking system these doors slide along the wall without taking up too much of your floor space, a great option if you want to be able to close off some of the spaces in your open plan home to create that home office or designated play room.

Our exclusive range of Glengary barn doors includes four beautiful designs, that can be finished in Dark or light maple stain, painted white for a crisp clean look or left raw for you to finish in your colour of choice.

They are available in a choice of size options, oversized doors for sliding along the tracking system or standard sized options for swinging hinged doors.

Finish options for the tracking system include black carbon steel for a more traditional look or for a more modern take, stainless-steel. The great benefit of these barn doors is that they are a standout feature in any room, even when open! From warm and rustic to clean and contemporary, the barn door trend is working for interiors of all shapes, sizes and styles.





“Having Zone Living doors means we can enclose the space and have some quiet time when we need to concentrate and focus on our work.”



Customer Profile

Janika Lawrence

Black Zone Living Bi-Fold Doors

More often than not, you know whether a house is the right place for you within moments of stepping inside.

For the owner of The Mood Collective Janika, the thing that sealed the deal was that their new home was a blank canvas, with a bright, open and interconnected layout.

They loved that the living spaces were free-flowing and felt that it would work perfectly for their family.

There was just one problem: they needed their home to function well for both work and play, both office time and family time.

Juggling the corporate role with a side hustle in interior styling and content creation – Mood Collective Australia – and her husband also works from home.

Although they had fallen in love with the open plan flow, with three children and a dog in tow they didn't always want that energy – and noise! – flowing into their focused workspace.

Sometimes you just need to be able to close the door.

A Discovery: Doors Plus Zone Living

Janika and her husband had previously enlisted the help of Doors Plus to install new front doors, to improve security at the front of their home, and had

found it to be a really positive experience.

They then heard about the Doors Plus exclusive range of Zone Living doors and wondered whether this might be the solution to their open plan problem.

After visiting the Doors Plus showroom, they chose a set of bi-fold Zone Living doors in a contemporary black finish, to complement their home style.

The hinged panels extend from wall to wall when closed, and then fold away to one side to open up the space once again.

The large glass panes allow a steady flow of light into the office space, and preserve that

continued on next page >

Customer Profile

interconnected feel with the rest of the living areas, while also helping to keep out the noise and create a peaceful and focused environment.

Janika says, “Having Zone Living doors means we can enclose the space and have some quiet time when we need to concentrate and focus on our work.”

The Fit: Getting in the Zone

When the day came, Janika found the installation process to be just as smooth and straightforward as it had been with their front doors.

The installers were friendly, professional and efficient.

She says, “Both times, the installers have come in, just got on with the job, and it has truly been no fuss.”

Once the work was completed, and the installers had cleaned up and left, Janika was able to take a step back and admire the transformation.

She couldn’t have been happier with the end result, and the difference it was going to make for them as a family.

Seeing the doors at the showroom was one thing, but seeing them installed in her home and in use every day fully exceeded her expectations: “The finished product is honestly better than I envisaged when we went to the showroom.

Now that I see it in my space it’s even better than I thought it would be.”

The Results: Best of Both!

The Zone Living doors have allowed Janika and her family to fully embrace the openness and flow that they first fell in love with about their home, while also facilitating focussed work that can be zoned off from the noise and chaos of a young family.

With both parents working from home, Janika explains that it was

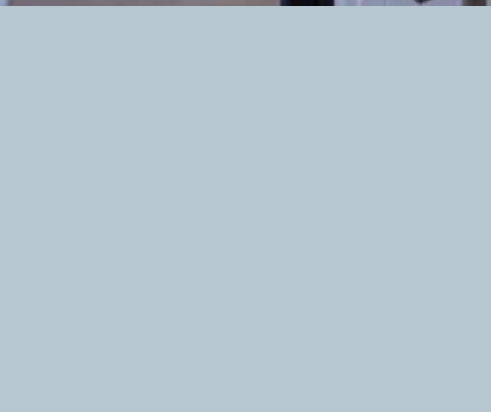
essential to have the option of “a quiet space that’s dedicated to our work and what we need to get done.”

At the same time, they weren’t about to sacrifice the interconnected feel of their family living space.

She says, “This product has just given us so many options with our home.

It gives us the ability to open up the space when we want to, and close it off and create a quiet environment for us when we need that too.”

Since discovering Zone Living, and all the possibilities these innovative door solutions unleash for them as a family, Janika hasn’t looked back: “I found the Zone Living doors to be a complete solution for our lifestyle and for our home.”





Alfresco Living

With all of us spending a lot more time at home these days, your living space might be feeling a little crowded, chaotic and over-stretched! You probably have days when you long for a bit more breathing room, and the space and flexibility to escape overlapping conversations, conflicting activities and noisy devices. Maybe you feel like you need a breath of fresh air, some real headspace and a bit of indulgence, but the idea of a holiday seems like a far-off dream. What if there was a simple way to expand, uplift and enhance your living space, and enjoy the al fresco lifestyle from the comfort of your own home?

Our exclusive Panoramic and Bona Vista collections of sliding, stacking or folding patio doors have been specially designed to give you the flexibility of open plan, al fresco living as and when it suits you, while completely transforming your interior living areas with a flood of natural light and unbroken views. Whether you choose the sleek and resilient aluminium of the Bona Vista range, or the solid Pacific Ash timber of our Panoramic options, you can instantly open up your living area onto a terrace, patio or verandah for your own home getaway!

Your Panoramic doors can be finished in a Dark Maple stain, while the aluminium Bona Vista frames are available in White, black, grey or primrose. Whether you choose a sliding, stacking or folding mechanism, you can combine multiple panels to fit your opening, and your doors are made to measure. Tailor made for the Australian climate, the stylish Aluminium Bona Vista range is resilient and weather resistant. Both the panoramic and Bona Vista ranges have options that can incorporate fly screens or security screens, to help keep your loved ones safe.

Just because you're at home, you don't have to miss out on all the pleasures and benefits of getting away. A stunning set of Bona Vista or Panoramic doors from Doors Plus is sure to breathe new life into your home, and your lifestyle. Even with the doors closed, your interior living space will feel light and airy, more spacious and more peaceful, and when open they create an indoor/outdoor flow that makes your home feel like a holiday destination every day of the week.



Bring the
Outside in



Add Character & Interest with Wainscoting

Wainscoting is a simple yet effective way of adding interest and character to flat walls, and introducing a stylish feature into any area of the home.

Originally a practical solution for reinforcing and protecting the lower portions of the walls in high traffic areas of the home, wainscoting is becoming increasingly popular as a style choice in many Australian properties. Whether you want to enhance your classic and traditional home decor or add a chic sense of style to a modern interior, our quality wainscoting will instantly transform the look and feel of plain walls.

We offer a range of customisable designs, which are supplied pre-primed ready to be finished in the colour of your choice, making it easy to compliment the homes decor and your personal taste. There are 12 different combinations to choose from, including an interchangeable top rail and back panels that can be flat, narrow



beadboard or wide beadboard. The spacing of the upright timbers can create very different looks. Whether close together or widely spaced, our carpenters will install the uprights according to your personal preference and specifications.

Our wainscoting wall paneling is designed to complement both the Shaker and Shaker beadboard styles of our internal door ranges, making it easy to achieve consistency and harmony from room to room. The minimalist Shaker style, with tasteful paneling, lifts any hallway or living area through its understated yet refined character.

Best of all, we will measure, make, deliver and install our wainscoting range – no fuss! Check with your local store to see if wainscoting is available near you.

Customer Profile

Adam & Vicky

When Adam and Vicky bought their new home in Marsden Park, it was on one condition: Vicky had her heart set on giving the house a cool and sophisticated Hamptons feel. She knew exactly what she wanted, and although she had come round from the idea of building their dream home from the ground up, she wasn't about to compromise on that dreamy, resort-style look. This was going to be their forever home, after all. "It was always going to be Hamptons," Adam admits.

More Than Just Doors

The first job, from Vicky's point of view, was to buy a new door for the walk-in pantry because she hated being able to see all of the clutter. To achieve the clean and minimalist Hamptons style, they wanted a neat bi-fold door to close off this space. Once they started looking at the many options and styles available in the Doors Plus collection, Adam also suggested that they could get a beautiful feature barn door.

When they visited the showroom in Minchinbury, they were surprised to find that there was so much more on offer besides doors. Other home renovation products started to catch their eyes, and

they found themselves dreaming bigger. As Vicky explains, "The range that you had... I couldn't believe that you had wainscoting. I just thought it was all doors. You had wainscoting, you had shutters. There was such a big range."

It was the wainscoting that really marked a turning point for Vicky and Adam. As they explored the different effects that could be achieved with this customisable wood paneling, they could immediately see how their home might be transformed into that elusive Hamptons retreat. They had turned up to the showroom with doors in mind, but what they had discovered had sparked their imaginations even further: Vicky says, "We went there, had a look, and found the most gorgeous barn door. In the end, I found more things – wainscoting to turn it into Hamptons! So exciting!"

Above & Beyond

It wasn't just the range at Doors Plus that came as a happy surprise. They also found that the friendly and helpful service made the whole process enjoyable, exciting, smooth and painless. Their Doors Plus consultant was able to open their eyes to

the possibilities, answer their questions, and walk them through their options.

Vicky says, "Kate was just gorgeous from the word go. Really helpful. We were only going there for doors and then when I found out that she had wainscoting, she showed me all the different ones they had. She was very, very helpful." Adam agrees: "They were knowledgeable, and they put us at ease. They told us what was available, what could be done, and the service was prompt."

When it came to installation day, the Doors Plus team arrived on time and virtually completed the work within a day. They returned the following day to make a few small adjustments and ensure that the job had been finished to the highest standard, and they cleaned up after themselves to leave the home in good order.

Living the Hamptons Dream

Vicky and Adam couldn't be happier with the end result. Adam describes the original look as "plain, boring gyprock walls", whereas the wainscoting has added depth, texture and character to the home. As Vicky says, "It changes the whole look.

It's like a wow feature. It's better than putting a picture on a wall. It's just gorgeous." In fact, she loves it so much that she's got her sights set on the family dining-room next!

It really is a transformation that infuses the whole home with the chic Hamptons feel, and it has the added benefit of providing protection against knocks and scrapes. The hard-wearing paneling can even stand up to the dog as he bolts down the hall after his toy.

The couple have been able to completely refresh and uplift the character of their home through a quick and easy process that surprised them at every turn with how exciting and enjoyable it could be. As Vicky says, "I got that Hamptons look that I was trying to achieve, with no fuss whatsoever." As Adam puts it, "Doors Plus is a no-fuss company, and deliver what they promise."

As Vicky sits back and surveys her forever home in all its new-found glory, she says, "I can't tell you how happy I am. It's absolutely awesome. That Hamptons look? Love it."



"I can't tell you how happy I am. It's absolutely awesome. That Hamptons look? Love it."



WORKING FROM HOME *IN* STYLE

For many of us, working from home has become the new norm. But, whatever your day job, as the country starts to open up, we have found solace and comfort within the same four walls of our home.

Still, the line between work and home life can remain blurred. Giving your home office setup a bit of attention could help you to maximise your focus and productivity while you're on the job, as well as maintaining that separation between work and family time to protect your work/life balance.

One of the most important factors when it comes to creating the ultimate home office is your choice of doors. At Doors Plus, we are revolutionising the home working experience with our innovative Shaker Zone Living collection. With effortless folding, sliding or stacking doors, you can create a calm and quiet space within your home when you need it, with the flexibility to open up and integrate your living space when it suits you.

The minimalist shaker style of the paneled timber doors gives them a timeless appeal that works well with any interior décor scheme, and throughout the home. They can be supplied painted White for a clean and contemporary look or finished in a light or Dark Maple stain.

Solid paneled doors give you ultimate privacy and minimise sound transference, while glazed options invite more light into your home office area and allow you to keep an eye on what's going on in the rest of the house! We also offer stylish mirrored designs, which can make your home office feel bigger and brighter.

All of our Shaker Zone Living units are custom made to fit your opening, and are supplied and installed as a complete unit, including hardware and framework. Up to six panels can be combined to fit wider openings, and the fluid folding, sliding or stacking mechanisms are smooth, quiet and convenient.

The right doors have the power to transform your home office, protect your productivity, and enhance the look, feel and functionality of your space.

The sleek and ingenious Shaker Zone Living range makes the choice a no-brainer, so you can get to work. ***Check your local store for product availability.***



Customer Profile

Rachael D

Rachael, her husband and their two boys moved into their forever family home in Melbourne in 2011. A content creator and podcaster, Rachael has been working from home, like so many of us, and all this time within the same four walls has brought into sharp focus her feelings about the environment around her, and her relationship to her living space. She has become especially aware of some of the things that they didn't quite nail with the original build – not surprising when it's your first construction and design project and there are so many decisions to be made!

It was the bedroom doors that really started to set Rachael on edge. While the existing double hinged doors were functional, they always seemed at odds with the space, but she and her husband had just accepted them because they basically worked. The problem was that, when open, they didn't sit flush with the wall but hung awkwardly into the room, blocking space and interfering with the whole feel and flow of the bedroom. When they wanted to leave the doors open for air flow in the summer, they found that they flapped around a bit and wouldn't stay put. They

didn't realise they might have other options for the space until Rachael came across the stunning sliding barn doors on the Doors Plus Instagram feed. She says, "I saw the beautiful doors they make and I thought, you know what, Doors Plus is definitely a household name, they have been around forever. I wanted to go with a company that had a good reputation."

Having never used Doors Plus before, Rachael found that the whole experience was really positive and personal. She says, "Going into our local Doors Plus store, we were met by a lovely salesman and he was able to answer all of my queries. I actually took in a photo of our bedroom, and he was able to look at that and tell me whether what I was imagining in my mind would work in our space." As a very visual person, Rachael appreciated all of the images and mock-ups, and that she could browse the options on the website and Instagram feed as well: "What was really great is that they have a lot of these doors on display, and they also have imagery to show you the different options, the different colour variations and accessories that you can choose for your door."

They considered installing the new doors themselves but when they costed it out they realised that the quote from Doors Plus was really competitive and it was a bit of a no-brainer to just let the professional carpenter get on with it! Rachael was able to carry on with her day and be with her children, and the carpenter took care of everything. He was friendly, professional and efficient, and completely put her at ease by listening to her point of view and answering her questions as he went along.

With such a clear and vivid vision of what she wanted, Rachael was blown away by the final results. She says, "I'm so excited and so happy with how they have turned out. It's better than I imagined to be honest." The new doors slide seamlessly along the wall and don't protrude into the living space. Both beautiful to look at, and effortlessly functional, the stunning barn doors have instantly updated and lifted the room, making it look bigger and feel more spacious. In summer, they can be left open without rocking to and fro, or taking up extra floor space, so that the bedroom stays cool, airy and

comfortable. Not only that, but the distinctive barn door style makes a stunning design feature in its own right, and the doors have been finished in White to complement the sleek, modern décor. As Rachael says, “The finish of it, the hardware...it’s just such a stunning piece.”

Having regretted her past experience of just trusting the builder’s choice, Rachael felt great confidence in the experts from Doors Plus, and appreciated that they were helping her to realise her own vision and concept: “They just know what they are talking about and they can obviously see from the space what will work and what won’t.” She and her husband had designed and built their home from the ground up, and although they didn’t get everything right first time, the upgrade to the bedroom doors has transformed their space and given them a fresh feeling of creating something personal, beautiful and supremely functional for themselves.



“The whole process is just no fuss.”





*For more
information about
special orders,
contact your nearest
showroom.*

Let your home stand out from the crowd

If the front of your house is looking a little out-dated and lacking in curb appeal, there is one sure-fire way to make a big difference. Why not open up your front entrance and install a stunning 1200 or 1020mm wide front door, for a grand first impression and an extra wide welcome!

The added bonus is that you'll never again struggle with to move large furniture or equipment in and out, or damage your framework in the process. A challenge that is mostly faced in newer suburbs, where houses are on smaller blocks with not a lot of room down the side of the house.

Our Eden, Arcadia and Californian ranges are full of contemporary front door designs for those who want to make a real statement. There are a range of different door designs to choose from, combining the warmth of Pacific Ash Timber with glass panels so that you can enjoy the bright and airy hallway. Depending on the style of door you choose we have options that can be finished in a rich Dark Maple Stain, a smooth honey gold Light Maple or painted in a crisp White. You can also choose to have your doors supplied and installed unfinished, giving you the freedom to choose your colour and really stamp your personality into it.





Timeless & Versatile **SHAKER DOORS**

The popularity of our Shaker series is continually growing, and it's not hard to see why. The crisp, clean characteristics and unique designs make our Shaker doors a timeless and versatile addition to any home.

The Shaker style dates back to a religious sect in the 18th century, known for their commitment to simplicity, utility and honesty. These guiding principles are reflected in the solid and enduring craftsmanship of Shaker furniture, which is defined by clean lines, minimalist design, and effortless functionality. You won't find any decorative adornments or ornamentation in the Shaker style, yet the furniture and doors are still visually interesting, creative and attractive in their design.

As it is the humility and simplicity of the Shaker series that is so appealing, these designs compliment a wide range of interior home styles and can enhance almost any décor. Available in both standard (2040mm) and tall (2340mm) options, Shaker doors can be incorporated throughout the home to set a consistent tone. While standard height doors will suit most

Australian homes, the taller option is available for more modern homes where openings can be 2400mm high, including storage cupboards and wardrobes. For even more versatility, our Shaker series can be installed as hinged or sliding doors to suit any opening or functionality and to maximise your space.

If you want to add a little more interest or variation to your Shaker doors, without losing continuity around the home, some of our door styles allow you to easily switch out the solid panels for glass or mirrored options. The mirror appears on only one side of the door so this is a great option for bedrooms and bathrooms, for example: enjoy the convenience of a mirror to check your outfit in the morning, while the outside of the door is consistent with the rest of your home.

Visit your nearest Doors Plus showroom today to see for yourself why our Shaker series is making such a splash!



Shake
it up!



“I’ve got a gorgeous front door, painted in my favourite colour.”



Customer Profile

Megan & Mark M

It's been 13 years since Megan and Mark built their family home, where they currently live with two of their four children, and two dachshunds. With the busyness of family life, juggled alongside their careers, they have inevitably accumulated a long list of outstanding home improvement projects over that time. This past year, they decided to draw up a checklist on a Whiteboard and start making some serious progress. First up: a new front door. If only they could agree on what they wanted...

Practical vs. Pretty

As a photographer and content creator, Megan has an eye for visual aesthetics and is drawn towards the pretty and the colourful. Mark, on the other hand, was keen to prioritise practicality and security. Apart from their existing door being a bit tired and dated, they had their suspicions that someone had attempted to break in in the past, so this was also on Mark's mind as he considered replacement options. As Megan explains, they locked horns over this, and struggled to find something that would make them both happy: "I wanted a pretty door. Mark wanted a functional door. And I didn't want to put a security screen on a pretty front door." For some time, they were at a stalemate.

An Open-Minded Reccie

Mark was aware of Doors Plus through his profession as a painter, so he set about researching their options and the Guardian 2in1 really caught his eye. The strong and resilient security screen was a big plus for him, and the fact that it was integrated into the door would also mean a more sleek and attractive finished look. It was clear to Megan that he had his heart set on this door, but she was still unsure that it would tick the boxes for her. Trying to keep an open-mind, she headed to the Doors Plus showroom to see Mark's dream door for herself, confident that they would be able to find a compromise somewhere amongst the extensive Doors Plus collection.

continued on next page >

Customer Profile

Then Things Got Personal

Their visit to the showroom only confirmed Mark's feelings about this unique door. He says, "When we went and looked at the door at Doors Plus itself it was like, wow, that's exactly what I wanted." Megan, too, was impressed when she saw the Guardian 2in1 for herself. Knowing how passionate Mark was about this option after all his research, she began to visualise how this door might have the potential to meet all of their criteria – and do it in style. They agreed on a compromise: Mark would get the door he desperately wanted, and Megan would choose the colour – pink! Crucially, the integrated security screen would mean no extra screen fitted over the front of her beautiful new door, and that really appealed to her.

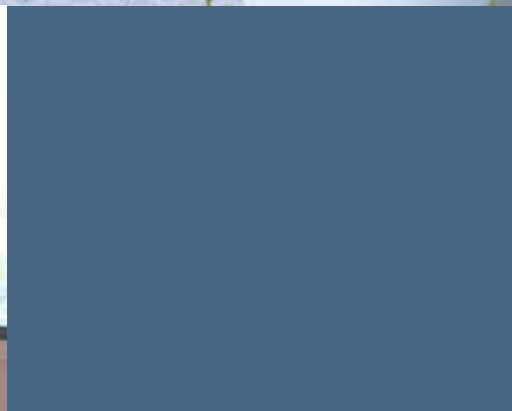
The doorway at Megan and Mark's house is wider than the standard opening, so they arranged to have their door made in a custom size. They opted for the 3/4 glass panel, rather than the full length panel, so that their small dogs wouldn't be able to see out of the door at the bottom, and they chose to have it installed raw so that Mark could paint it himself. They also went for black hinges and a black pull handle, for their personal touch of style, and they installed their own digital thumbprint lock for added security. As Megan says: "In the end, Mark really wanted that door. I wasn't sure. But from going in to the store, having installed the way we wanted and painting it ourselves.... It really was the best. It was seriously no fuss."

"Shout Out to Todd!"

Following their positive experience at the showroom, Mark and Megan were just as impressed with the carpenter who came to install their door. He arrived when he said he would, took pride in doing the job well, and cleaned up once he was finished. He fitted their chosen hinges and handle, and installed the door so that it was ready to be painted. As Megan puts it: "He was amazing." And Mark agrees that the whole process was seamless: "Absolutely no fuss. Really, it was!"

Harmony in the Home

Finally, both Megan and Mark are in love with their new front door. The outstanding practicality and flexibility of the Guardian 2in1 ticks all of Mark's boxes and keeps their home secure, day and night. For Megan, it's transformed the look and feel of their entrance – inside and out – and she can't stop looking at it: "I've got a gorgeous front door, painted in my favourite colour." The large glass window invites plenty of light into their home from the outside, making the whole area feel bright and fresh, and they have the flexibility to open up the panel and let the breeze in when it gets warm. As Megan says, "It's lighting up my life!" After being locked in a stalemate for so long, Megan has to concede: "Perfect choice of door, Mark!"



Mirrored doors that blend **WITH YOUR DÉCOR**

More and more of our customers are enjoying the many benefits of mirrored doors at various points throughout the home. Whether on the inside of a bathroom or bedroom door, or on a sliding wardrobe track, mirrored doors are convenient and practical and you'll wonder what you ever did without them!

But it's not only that. The addition of a mirror to one side of your door is a sure-fire way to instantly transform your living space. The mirrored panel reflects natural light around the room, enhancing and illuminating the area and making any room feel airy and spacious. They are also a smart choice for maximising your floor space – a full-length mirror is a must-have in any bedroom, bathroom or en suite, so why not incorporate it into the door?

All of our mirrored options are collected together to form the Reflections range, and can be installed in either a hinged or sliding configuration. This means you can choose to have the mirrors on the inside of your bedroom or closet

doors, or on the outside of your sliding wardrobe panels to create an uplifting design feature in their own right. The advantage of having a mirror on only one side of a hinged door is that, when closed, the door blends seamlessly into the style of your home, matching the rest of your internal doors.

Mirrored doors are also an excellent way to make better use of a hallway cupboard, giving you one last chance to check your look before you leave the house, or in a laundry room where there is often a lack of natural light.

We offer a wide variety of design choices within our Reflections range so there is a mirrored option to suit every

home and style. Historically, our Marsden range has proved the most popular internal mirrored door design, but our Shaker series is also a great choice for a sleek and stylish look that incorporates mirrored options. You can also choose to simply update some of your existing doors to include a mirrored backing and enjoy all the benefits without a major renovation.

Talk to one of our friendly Doors Plus experts today to explore our mirrored options and discover the possibilities for your home.



Add some
fun!

Express your personality with colour



More and More, homeowners are letting their eye for design extend to their doors. We are starting to see our customers expressing their tastes and personalities through colour, on their front doors; from the moment guests arrive, through to their interior spaces. As Instagram and Pinterest will testify the boldest amongst us are taking a chance with colour and putting their personal stamp on the doors throughout their homes, but it is also important to choose wisely and be aware of going for shades that are too dark on exterior doors. **(Check out the next article on page 29 for more information).**

Your front door is the first chance you get to make an impression on visitors and passers-by and is a great opportunity to give people a taste of what they can expect once they step inside. Almost all our ranges at Doors Plus can be supplied pre-primed and ready to paint or stain, so you can add your personal splash of colour and make them your own.

We have a huge selection of door designs available, from sleek and contemporary to elegant and traditional, and each can be delivered to you ready to paint. Our ranges include solid or glazed styles, incorporating clear, translucent or decorative glass, and both single and double configurations, so there's no limit to the look you can achieve. You can get even more creative with added side panels in a matching or complementary colour. Whether you choose to paint or stain your door, our team of consultants can guide you, so that it's easy for you to get a clean and professional finish, whatever your shade. Whether you go for a sophisticated neutral tone, or something far bolder and brighter, colour is a fun and simple way to make a statement with in your home.

Why your Exterior Door should never be painted Black

Your desk is covered in paint samples fabric swatches, and you have 10 tabs open on your browser — each pointing to a different interior design blog. Yes, making over your home is an exciting time indeed. In a fit of design fervour, you may be tempted to add a dash of drama to your front door in the form of dark paint. Black paint will contrast with your crisp White exterior add a sophisticated look, you think. At Doors Plus, we're here to tell you to that black paint and exterior doors don't lead to a happy union! Here are the reasons we recommend you never paint your exterior doors with black paint.

EXPOSURE TO THE ELEMENTS

Have you ever been at a Theme Park for the day, standing in line for rides under the warm afternoon sun, your regret for wearing a black T-shirt growing stronger each hour? We've all experienced some version of that story. That's because dark-coloured clothing naturally absorbs light, while light colours reflect it. When it comes to your home's exterior doors, the physics are no different. Because black paint absorbs more UV rays than lighter colours would, a black door will become hotter than it should. Hotter than it can withstand, even. Interior doors can handle a bit of extra sun, but an exterior door faces loads of negative side effects when facing the elements directly.

POSSIBLE SIDE EFFECTS

A black exterior door that absorbs heat each day will swell and shrink over and over until the timber can't take it anymore. What happens then? Some doors may split, crack or warp until they no longer fit properly in the frame. In fact, the door frame may even warp in reaction to the swelling door. These negative side effects are why painting your door black unfortunately voids its Doors Plus warranty. A timber door that would last years if painted White or cream will simply deteriorate faster once a Dark Paint or stain is applied.

HOW DARK IS TOO DARK?

Adding a pop of colour to your door or window frames can add curb appeal, it's true. So, if black is off the table, what other hues might you replace it with? All paints have something called a Light Reflectance Value, or LRV. Look for a paint with a LRV of at least 55 percent. The higher the paint is on the LRV index, the more light it will reflect, and the less likely it is to cause a timber door to crack or warp. To give you an idea about how far black paint is from being within an appropriate range, it's often valued at 0 percent! Instead of using black to pump up the drama on your front door, consider choosing a light gray or hue of brown that passes the LRV test.

A black exterior door sounds keen in theory, but the reality of your ebony choice won't be so rosy. Black paint absorbs too much sun and splits timber — right along with your dreams for a safe front door.

The Value of Fully Finished

With the pace of everyday life only getting busier and more intense, who has the time to worry about painting or finishing doors themselves? Once you've got your new doors installed, you don't want them to become another chore on your to-do list – you just want to get on with enjoying them!

At Doors Plus, all of the doors across our extensive ranges can be supplied and installed fully finished. You can choose our signature Dark Maple stain, for a rich and deep tone, or a crisp and contemporary White paint finish. Some of our door collections also offer the option of a Light Maple stain, which allows more of the natural timber character to shine through.

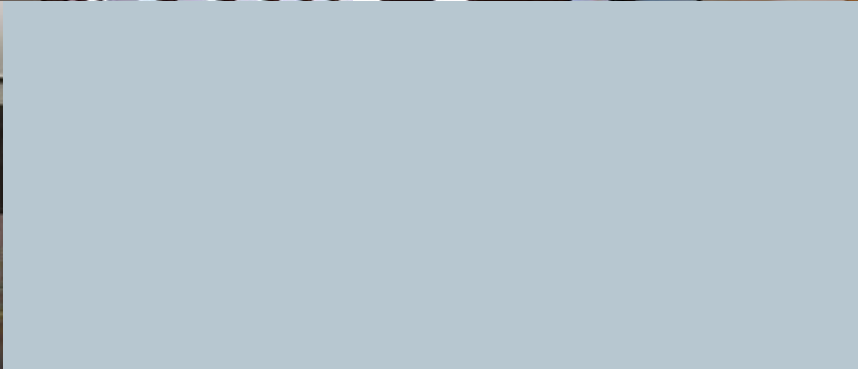
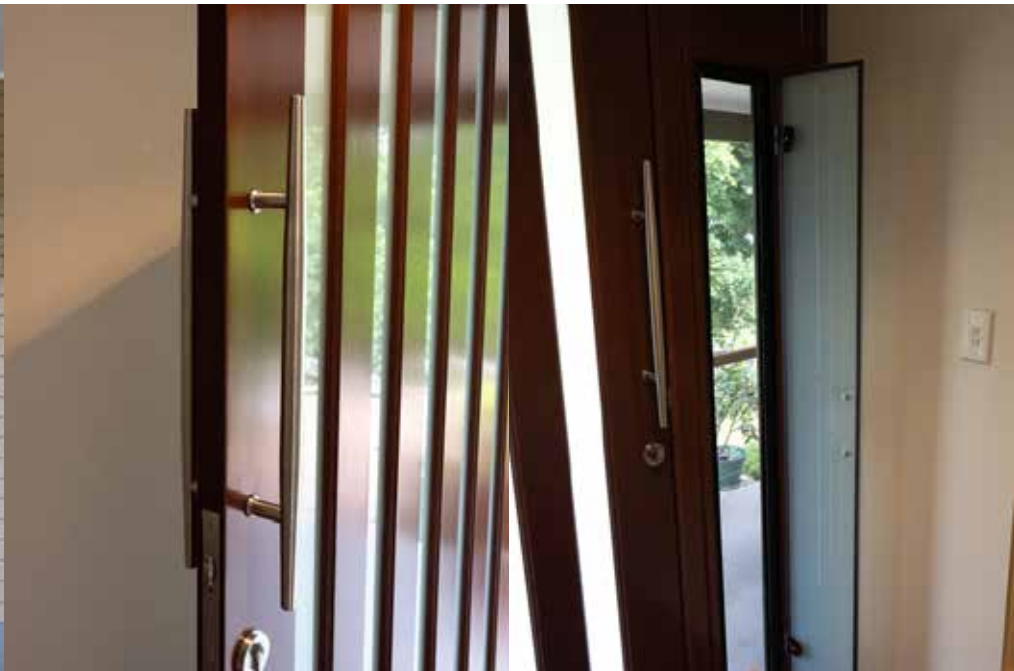
We also have an exclusive range of hollow core internal doors called the Nova series that are finished with a White melamine skin. These are a great choice if you're looking for a more economical option for internal doors throughout your home, without compromising on style and finish.

Our Nova doors can be installed in either hinged or sliding configurations, making them a sleek and convenient option for all kinds of openings, including wardrobes. The bonus of the melamine skin is that it offers superior strength and durability so that your doors can stand up to the wear and tear of everyday use, and they are exceptionally easy to clean. Marks and scuffs are inevitable in a bustling family home, but with the resilient Nova series you can simply wipe them off with a damp cloth.

Our current package includes the finished door, handles and hinges, as well as delivery, installation and warranty. Visit your local Doors Plus showroom to find out more, and to explore our other ranges and finishes.







“My whole Doors Plus experience was very positive – from looking online, going in store, ordering, having the doors installed, and then the painting process. It was easy, no fuss, and we’re really happy with the end product.”



Customer Profile

Annette S

Over the last 28 years of living in their home, Annette and her husband have worked their way through various renovations and home improvements, but the front doors lingered as the last job on the list.

It was when returning home from holiday with fresh and critical eyes, and approaching their tired old front entrance, that they knew the time had come – the doors had to go.

The Problem: Out With The Old...

Their old doors were outdated, worn and cracked, and covered by an unattractive screen door.

This obviously had an impact on curb appeal, and the overall look and feel of the house from the

outside for Annette, but it also potentially compromised the insulation and security of their home.

As she began to consider their options for a replacement, Annette found her head turned by some other houses in the area that had extra wide front doors.

These caught her eye as an attractive and welcoming entrance, and she really liked the look of them.

The Solution: Elegance & Security in One

It was then that she heard about the Doors Plus Guardian 2 in 1 security screen side panel as a potential solution.

The fact that the integrated design would mean there was no need for an additional screen to cover the door really appealed to Annette.

She began to glimpse the possibility of a front entrance that was both secure and aesthetically elegant.

They had always had screen doors over their front entrance for enhanced security, and liked to be able to open up their doors to let in some fresh air while leaving the screen in place.

But, as Annette says, “To cover up that beautiful door wasn’t going to be an option, so when I found out about the Guardian that was great.”

continued on next page >

Customer Profile

This 2 in 1 solution has a built-in stainless steel mesh, so the window panel can be opened without compromising on security: “I could open it up but still have the security there, let the breeze come through but not impede the view of the front door.”

The Experience: From Showroom to Installation

The Doors Plus name was familiar to Annette and her husband as a trusted brand for household doors, so they went to visit the Marsden Park showroom to really kick their door search into gear.

At the showroom, with the help of a Doors Plus specialist, they were able to see the Guardian door in action and get into a lot more detail about the exact style and configuration they wanted to go for, as well as the finish, fixtures and fittings.

They settled on the 1200mm Guardian door with an additional side panel, in solid Pacific Ash timber and extra strong SafeGlass.

Now, they could start to see their vision of a beautiful, solid and secure front entry door becoming a reality.

Reflecting on how helpful it was to visit the showroom and explore the doors in person, Annette says, “When I saw the door on display with the Guardian side panel I could visualise what it would look like at the front of the house.”

Annette’s husband had originally planned to do the installation himself, but when they realised that they could get the whole package done through Doors Plus, at a reasonable price, it seemed too good to turn down.

Annette says, “To have someone come in on one day, finish it and be done...we thought it would be a better option just to get it done totally by Doors Plus.”

Sure enough, from their first introduction to the Guardian side panel through to installation day, their experience turned out to be smooth, effortless and enjoyable: “I’ve been very, very impressed with Doors Plus. I could not fault them.”

The Results: A Front Entrance to Turn Heads

Annette and her husband can now enjoy a warm welcome home, and be proud of their front entrance when visitors come calling.

Thanks to the new Eden Wide front door and the integrated design of the Guardian 2 in 1 side panel, they can let in the

breeze or check who's at the door without compromising on security, and their beautiful new door can stand proud in all its glory, without being obscured by an unappealing mesh.

As Annette says, "The new door installation has just totally transformed the look of the house and I'm really, really pleased with it."





Naturally lit with internal glazed doors

Are there some areas of your home that never see the light? One of the real appeals of open plan living is the fresh and airy feel, as there is nothing to stop natural light from filling the entire living space. And it's good for you, too! Natural light is said to help with energy levels and focus, as well as general health, happiness and wellbeing, and it contributes to the developing eyesight of younger children.

But open plan living isn't for every family, so do you have to sacrifice the light if you choose to divide your space with doors? No you don't! Dark rooms

and hallways can be utterly transformed and uplifted by installing glazed internal doors. Glass panels invite natural light to flow throughout the home and breathe fresh life into dark corners.

Our various ranges of external and internal doors include clear glass, for maximum light flow, or translucent options for greater privacy – in bedrooms and bathrooms, for example. You can even choose from our decorative glass options, for an even more personal and stylish touch.

The final TOUCH



There are a lot of decisions to be made when it comes to updating the doors throughout your home, and making sure that you get the right hardware for your chosen style is one of them. This might be one of the very last decisions you have to make, and you may not have given it much thought before, but it is a crucial choice that will help pull together the overall look that you want to achieve with your new doors.

Hardware includes things like handles, locks, hinges and tracking systems, and they all come with their own colours, styles, designs and function to consider.

If you're after something simple but effective, you can't go wrong with the traditional combination set, which includes a keyed alike knob handle and a dead lock. To complete the look throughout the home, you have the option of matching the same style with the privacy and passage sets in the interior.

In terms of finishes, we anticipate that matt black will be a popular finish option on hardware throughout 2023. We offer pull handles for entrance doors, interior passage and privacy handles, and the barn door tracking systems and

hardware, all in chic matt black so that you can follow this trend all around your home. Matt black crosses all style boundaries, complimenting simple, monochromatic environments but also flourishing in bold and colourful spaces.

Having said that, stainless steel finishes continue to prove very popular too. You will find this finish available across the entire Doors Plus range of knobs, lever handles and pull handles so that you can create a consistent look and finish from room to room, inside and out. Stainless steel works in many different styles of home and can enhance both traditional and contemporary schemes. In its sleek simplicity, it compliments our painted door finishes as well as our signature Dark Maple stain.

Whatever you decide, don't let hardware be an after-thought. If you want some advice or guidance, drop in to your nearest Doors Plus showroom and one of our expert consultants will be happy to walk you through the options so that you can finish your renovation project with a flourish!

Customer Profile

Sarita & Brodie

Sarita, a model for an Australian fashion label, and her husband Brodie, an ex-AFL player and local football coach, are a professional couple with a young family to keep them busy too. As if that wasn't enough, they've also been working through their long list of home improvements to renovate and uplift various areas of their home. From the moment they set foot inside their heritage house in Melbourne, Sarita could immediately see the potential to create a beautiful family home for their three children and various four-legged friends. It was an old Victorian property, with dark walls, and she was excited at the opportunity to freshen it up and bring more light in. But after two years of DIY projects they reached the limits of what they could do themselves."

A Dark & Awkward Space

The sticking point was the awkward room at the back of their house. It had become a bit of a nothing space, and a dumping ground for the kids' toys and devices, but they were sure that it had the potential to be a valuable family space. It was functioning

as an extension of the lounge room, where the kids would play video games or Sarita and Brodie might watch TV, but it was an odd shaped room and only had two long, skinny windows, so it was always dark. There was also the issue of not being able to see into the back yard when the kids were playing out there, or jumping on the trampoline.

Turning to Trusted Experts

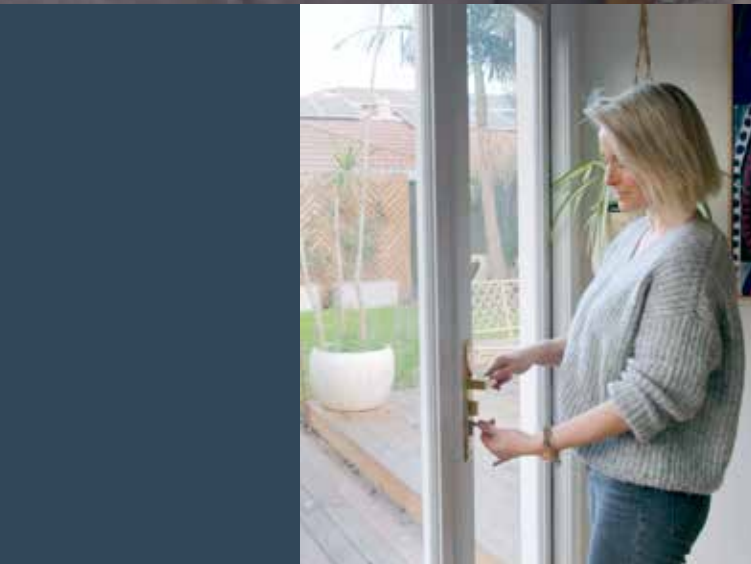
They knew they needed to do something to make this room lighter and brighter, and more connected to the back yard. They could see it working as more of an integrated family and entertaining space, and creating a flow from the outside in, but they needed some advice about the best way to achieve this. That's where Doors Plus came in. Sarita says, "I heard about Doors Plus years and years ago. When I think of doors I do think of Doors Plus, always – I think the jingle helps! Doors Plus, No Fuss... There's a store quite local to us and a lot of my friends have used them before and have been really happy, so it was kind of a no-brainer for me to go with the professionals."

Visualising the Potential

They were initially thinking of simply replacing the tiny windows with much larger alternatives, but when Sarita visited her local showroom in person she was blown away by the variety of options available to them, and excited about the potential to completely transform how they use their space. She says, "Going into my local Doors Plus store was really important for me because I'm not great at visualising things and I like to be able to touch and feel a product before I purchase it. I had a really friendly sales consultant, who was amazing. He took me through my options and I didn't feel overwhelmed. He made the decision quite easy for me." They settled on the Panoramic timber bi-fold doors and arranged a free measure and quote for the following day.

Specialist Advice for a Seamless Fit

Both Sarita and Brodie found it invaluable to be able to talk through their exact specifications in situ, and were impressed with how knowledgeable and thorough



***“I was impressed.
It’s actually a
lot bigger than I
thought it would
be, and letting more
light in than
I thought there
would be as well.
But just as a visual,
it looks amazing.”***

Customer Profile

the Doors Plus representative was as they discussed their options. As it was an older property, there were a few things that needed to be fixed or tidied up before the doors could be fitted, and they were also planning to install decking at the back, so they were given expert advice about the order and process of these works so that the end result would be a really flush fit. They were impressed with how informative and helpful the Doors Plus carpenter was, and that he clearly wanted to make sure the job was completed to the highest standard. When it came to installation day, he made quick work of the fit and left the area spotless: Sarita says, “I was really impressed that they left things perfectly clean, with nothing for me to do. It was great!”

An Effortless Paint Job

They chose to have their Panoramic bi-fold doors supplied in raw timber, and then enlisted the help of a professional to paint them White. This was a quick and painless job, thanks to the Doors Plus Paint 'n' Peel film. The doors arrived with this film already in place, so the painter didn't need to prep, mask up the doors, or worry about getting paint on the windows. Once the paint was dry, they peeled off the film for a stunning and seamless finish.

A Transformation of Home & Lifestyle

As accustomed as they are to seeing a vision realised, it's clear that the end results far exceeded the couple's expectations. Sarita says, “I could not be happier. I mean, I knew that they would look great, but just the amount of light and how much of the back yard I can see is incredible.” Brodie agrees that he was blown away by the difference the doors have made: “I was impressed. It's actually a lot bigger than I thought it would be, and letting more light in than I thought there would be as well. But just as a visual, it looks amazing.” The once dark interior of this majestic Victorian home is now flooded with natural light and fresh air, and Sarita can see the benefits of this in more ways than one: “I'm excited to hopefully have some cheaper electricity bills because we won't need as many lights on in the house, so that's a bonus!”

Not only do their new doors look breathtaking and uplift the feel of their home from the inside, but the couple can already see how these Panoramic bi-folds have the potential to transform home life for their young family. As Brodie says, “We'll be able to leave the doors open when the weather's good. The kids will be able to play, we'll be able to see them play. It just changes the way we live.”

By replacing the old, ineffective windows with full, Panoramic bi-fold doors, they have created a flow from inside to outside and expanded their living and entertaining space. Sarita says, “It has honestly made the biggest difference to how we use both of these spaces. We can open up these beautiful doors and bring the outside in.” She looks forward to the effortless flexibility of summer socialising: “I'm super, super excited to start using that space as an indoor/outdoor entertaining area. I can imagine us having BBQs out on the deck, leaving the doors open, watching the football...” And Brodie's words say it all: “I'm looking forward to it already!”





French door flair

As far back as the 16th century, inspired in part by the architecture of the Italian Renaissance, French homes began to feature double doors and windows to lead out onto balconies and allow more natural light into darker spaces. Today, the French door trend generally refers to a double set of hinged glass doors that opens in the centre, leading out onto a patio or decking area, and they remain as popular as ever! French doors are pleasingly symmetrical, and allow the whole space to be accessed when both doors are opened, and more and more Australian homeowners are enjoying the benefits to their homes and lifestyles.

Double doors can be ideal around the exterior of your home – as a majestic front entrance, or to open your living space up into an outdoor area – but they also make an excellent choice for some interior entryways. For example, you might choose to install double doors between living areas, to allow a flow of light around your home and give you the flexibility to open up your space when it suits you. Typically, when double doors are installed into an opening, one is the main, active door, while the other is fixed in place but can be opened as needed. Not only does this give you the spacious feel of open plan, but it's great for moving large furniture in or out.

But the most transformational impact of installing double doors with large glass panels is that they act as a wall-to-wall window, inviting light to flood your home and uplift your living space. Whatever the weather, you can feel connected to the



outdoors and refreshed by the natural elements from the comfort of your home. Whether you're preparing a family meal in the kitchen, or waking up to the glowing light of the morning sun, double doors around your home help to blur the lines between indoors and outdoors and create an expansive and airy ambience.

With Doors Plus, you don't need to worry about the potential hazards of large glass panes around the home, either. Our exclusive SafeGlass™ is heat treated so that it's up to 500% stronger than ordinary glass and, if broken, will crumble into granules rather than shattering into dangerous shards. This both protects your home and family, and reinforces your glass doors against the rigours of daily use.

As long as you have the space for double doors, the possibilities are endless. You can choose any of our door styles and designs, in hundreds of different materials and finish options. This gives you complete freedom to choose a style that suits your tastes and beautifully complements your home and décor. From traditional to contemporary, timber to composite, wood-stained or painted, you can find double doors that will transform the look and feel of your home, inside and out.

Visit your nearest Doors Plus showroom to explore our full range of double door styles, designs, materials and finishes, and to discuss your particular needs with one of our experts.

Bedroom Essentials

When you start to think about the doors in a bedroom, you begin to realise that there are actually quite a lot to take into consideration! There will be one or two main doors leading into the room, up to four or more for the wardrobe and potentially another for an ensuite.

We touched previously on the benefits of including featured mirrored doors within a bedroom to give you the convenience of a full-length mirror, and a chic feature in their own right, without taking up extra floor space. Our Doors Plus Shaker and Marsden ranges include the option of a ½ or full-length mirrored panel on one side of the design, while the other face of the door can match the design of the rest of your home.

When it comes to wardrobe doors, there are almost endless options, and the decisions you make will be unique to you and your home. If your bedroom is tight on space, it's a good idea to opt for sliding wardrobe doors in either standard height (2040 mm) or tall (2400mm to 2340mm) options to make the room feel bigger and more spacious as shown here in our Shaker Beadboard and New Yorker Styles. Team your sliding doors with the Robesaver tracking system for 2, 3 or 4 panels and enjoy the smooth and effortless glide.

Bi-fold doors also work well if space is an issue for you, and they offer the added bonus of giving you complete access to the entire wardrobe when the panels are fully open. You can combine two units for wider openings, and could also include clear, frosted or patterned glass to turn your bedroom doors into a stylish feature.

If you really want your bedroom doors to make a statement and play a key role in setting the tone for your design scheme, our Glengary barn doors are a stunning choice. Bringing their own sense of character, warmth and grandeur to your bedroom, these striking sliding doors come with either a black carbon steel or stainless steel track. We have found that many new builds have walk-in wardrobes and en suites that are exposed to the main bedroom, so if you want to close off these areas with a set of distinctive and stylish sliding doors, the Glengary barn door range is an elegant solution. This style has exploded in popularity in recent years, and this is a trend that we see continuing in bedroom spaces throughout 2023.



Character
and
Warmth





***“What I loved about Doors Plus?
It was all done for me. Installation
was very professional. They were
on time, and they were tidy. To find
a tradesman that is tidy is a bonus.”***



Customer Profile

Kate S

As an interior designer and product stylist, Kate Sparks knows how to look at a space and realise its full potential. She spends her time creating beautiful, unique and functional nurseries, play rooms and family environments that work for her clients and enhance their lifestyles. So she understands, better than anyone, that a family home is more than bricks and mortar, and that it's the personal touches and attention to detail that transform a space and bring it to life. And when it came to updating her own living space, there was an added level of poignancy to her efforts.

Kate is bringing up her young children in the home that once belonged to her grandparents

so, as she says, it is a space that is very personal to her and that holds an important place in her heart: "Within these walls are my childhood memories, and to be able to bring my own children up in this home is really special." She wanted to refresh and modernise the space, and make it work better for her family's day to day living, but of course she was anxious to retain the feel and character of the home that has meant so much to her over the years.

With her professional eye for design, she knew what she was looking for and wasted no time: "When I first walked into Doors Plus I had my eye on French doors; I do love the look of French doors, and I just

love the way that they offer that open plan living." But once she was in the showroom and browsing the collections in person, the consultants introduced her to a wide range of options, from French doors, to folding, stacking and sliding ranges, and she was inspired by the various smart solutions for a contemporary, open plan feel. Although she's a pro when it comes to interior design choices, Kate really valued the time the consultants took to walk her through her options and help her find the solution that would work best for her home.

continued on next page >

Customer Profile

Talking with a Doors Plus specialist about her vision for the space, her specifications, and the various pros and cons of each of the options, Kate settled on her perfect match. As she puts it, “I fell in love with their bi-fold doors.” She opted for the stylish Bona Vista aluminium and glass bi-fold doors because they would flood her living space with natural light, and give her the option of spacious, open plan living that flows seamlessly from inside to out: “My favourite part of the new install would have to be the flexibility to open them right up. It just creates a whole new environment.” These doors suited Kate because they are sleek and contemporary, but also subtle in design, and they fold away discreetly when open, so they don’t make a striking statement that might not be in keeping with the rest of the

house. They are also a secure and durable choice for a family home with small children.

But Kate didn’t stop there! While visiting Doors Plus, she also chose a new door for the laundry, which backs on to the children’s play room. This was quite a dark space that needed an injection of natural light, but Kate also wanted a highly practical, no fuss solution. She chose the Harmony Venetian door, with an integrated Venetian blind encased between two panels of clear, Doors Plus Safeglass. This gave her the flexibility to open up the blind and let the sunlight in, or close it for privacy when necessary. For Kate, this was a convenient and practical option, and super easy to clean, and she didn’t have to compromise on style.

This combination of good-looking products, exceptional functionality, and the stress-free convenience of the comprehensive Doors Plus service is what sold the whole experience to Kate. As she explains, “Practicality is number one as a busy mum. You want something that you’re not going to have to constantly be working at. You want something that’s just functional and easy for everyday life and something that obviously looks nice as well.”

She loved that she could visit the showroom and view her options in person, get expert advice from a specialist, and solve multiple problems around her home in one go. On top of that, she didn’t have to worry about delivery and installation: “What I loved about Doors Plus? It was all done for me. Installation was

very professional. They were on time, and they were tidy. To find a tradesman that is tidy is a bonus.”

Kate’s home is her sanctuary. It’s a place that’s full of family history and sentimentality, but it is also being filled and shaped, every day, by new memories that will be treasured by future generations. She wanted to make subtle, practical and stylish changes that would bridge this gap and enhance the environment for her family. It’s a delicate balance and a precious space that needed to be handled with care, so Kate was relieved to be able to trust the safe, reliable and expert hands of the Doors Plus team – from consultants to carpenters, and everyone in between: “They came, they measured, they installed it fuss-free. Easy.”



Innovative *Side Panels*

Driving through a new estate, you can't help but notice the cookie cutter home designs, where each is almost a carbon copy of the next. It's not just the architecture and style of the houses, but also the monotonous repetition of the same old front door. It's amazing how much of a difference it can make to the look and feel of your home if you play around with your front door style and configuration. Why blend in when you can stand out? By mixing it up a little with the layout and design, you can create instant curb appeal and give your home its own sense of identity.

Adding glass side panels not only creates a stunning first impression but is also a great way of inviting more natural light into your entry way. Gone are the days when a "side panel" meant a large pane of unsafe amber glass to one side of the door. At Doors Plus, we have a huge range of options and styles, whether you want single or double, simple or grand. You can opt for decorative glass to set an elegant tone, clear glass for maximum light, or translucent glass for greater privacy. You can choose to have them fixed into the frame or installed with hinges, which gives you flexibility when you need complete access to the opening.

Not only can you be creative with the configuration, but more and more of our customers are choosing to mix and match ranges to create a truly individual look – a trend that looks set to continue throughout 2023. Our side panel ranges include some unique innovations that make it easy to achieve just the look and feel that you want, without sacrificing the comfort, safety or security of your home and your family.

Our Guardian side panels allow you to open up the glazed panel to increase air flow around your home, while still providing the security of a 316 marine grade stainless steel screen to keep out unwanted visitors. To read more about this exclusive product [click here](#). Similarly, the ingenious Harmony side panel has a venetian blind inserted between two sheets of clear Doors Plus Safe Glass, giving you complete control over the light and privacy in your entry way.

At Doors Plus, we can help you to create a unique and interesting front entry doorway that suits your home and lifestyle. Head in to your nearest Doors Plus showroom to discover our ranges for yourself, and one of our friendly consultants will be happy to help you kick off your transformation today.





Create a stunning
first impression



Your Home Theatre **ZONE**

Cosying up on a Friday night with a bottle of wine maybe some cheese or fancy chocolate and sitting back to enjoy a movie in the quiet of your own home sounds like pure bliss right?

Or pressing play on a Disney® classic on a Saturday afternoon to give the littles ones some quiet time... You just can't beat it.

With multiple screens being used within the home all at the same time having the option to close off certain rooms and create quiet spaces is invaluable. Throw in the luxury of being able to close off your very own home theatre space for a movie night or just a Netflix binge and you can see why the Doors Plus Zone Living range is taking our customers by storm.

Depending on your space and preference you can choose sliding stacking or folding doors that can be pushed out of the way for open plan sociable living or closed when you want a bit of privacy or quiet time. These custom-made units are measured made and installed by Doors Plus with

all hardware and tracking included. We offer 2 door sliding 3 door stacking or 2-8 panel folding units to suit any openings and space restrictions.

The panels are double-glazed for insulation which helps to minimize the noise transference between your living spaces and give you that oasis of calm. You can choose clear glass for maximum light flow or translucent for greater privacy and the glazing is encased within the unit making them easy to clean.

Our exclusive Zone Living solutions are available in four different finish options and are on display in every Doors Plus showroom (check with your local store). Head into your nearest showroom to experience the Zone Living revolution for yourself explore the wide variety of panel options and speak with one of our friendly consultants about how we can make your home theatre dream a reality!

*Cosy up on
a Friday
night*

*Pure
Bliss*

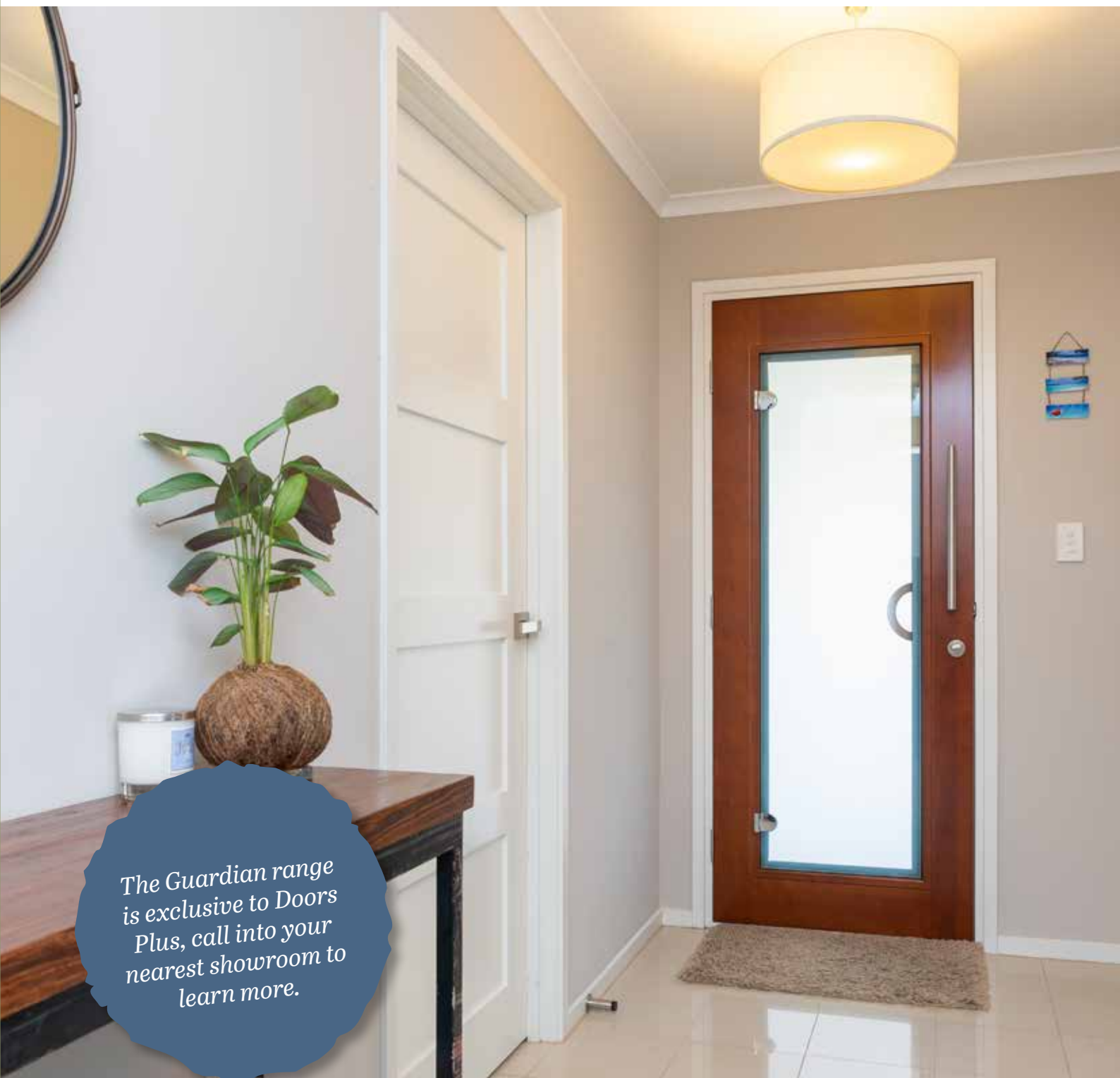


Function, Style & Safety *in One*

Don't you wish you could shut out unwanted visitors without also losing out on light and fresh air? Security and screen doors are popular for protection and peace of mind, but do you have to sacrifice style for security?

At Doors Plus, we have created a unique screen door solution that gives you complete flexibility and security without compromising on style. Our Guardian 2in1 external doors include a translucent panel of Doors Plus SafeGlass™ and an integrated stainless steel mesh screen, to provide superior security for your home and maximum convenience for you. Tired of messing around with a separate screen and front door when your hands are full? The Guardian 2in1 door gives you all of the benefits of a screen door, without the fuss.

From the inside, you can open the glass panel while keeping the door locked and the screen in place, letting in the breeze but keeping up a line of defence against bugs, debris and intruders. Unlike many security and screen doors, the Guardian range includes a choice of stylish designs and finishes, so you can find a look that both protects your family and complements your home. The Guardian range is exclusive to Doors Plus, call into your nearest showroom to learn more.



Why Choose Doors Plus?



Simply

PAINT "N" PEEL™

For a quick, clean & easy finish.



Paint



Trim



Peel

No more hassle masking up the panels of glass to paint or stain the door. Simply **paint**, **trim** and **peel** away the protective film for a **No Fuss** finish.

DP TV

Click to watch on doorsplus.com.au

Contact us today or visit one of our showrooms

 doorsplus.com.au

 **1800 750 231**

DOORS™
PLUS

Doors Plus ... No Fuss